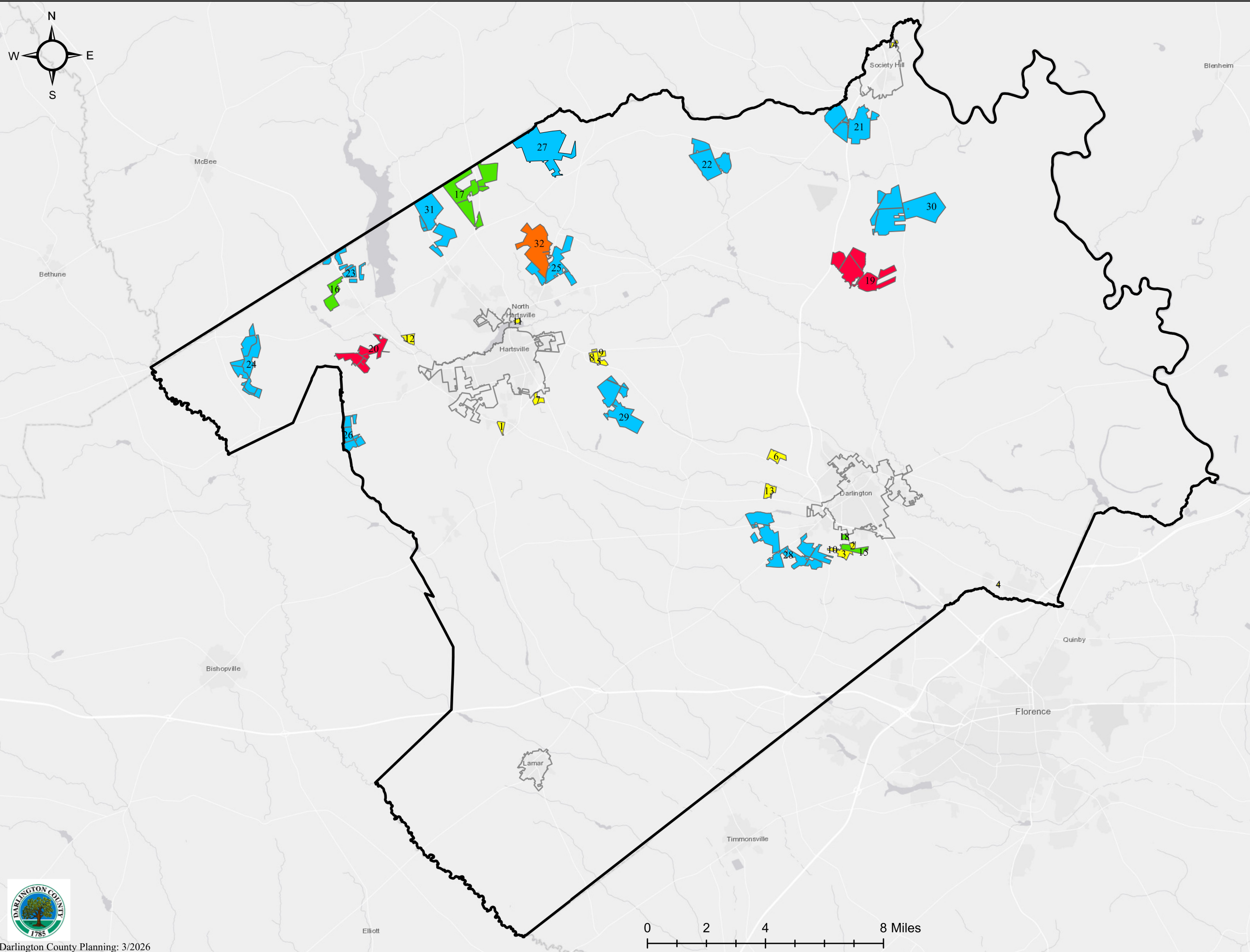
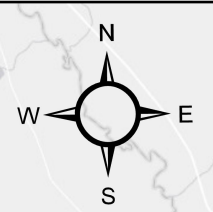
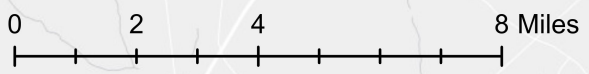


Solar Projects: Darlington County

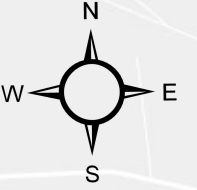


- Legend**
- County Boundary
 - City Limits
 - Operating**
 - 1- 1634 Solar
 - 2- Ashley Solar
 - 3- Birch Solar
 - 4- Central Electric Power Coop
 - 5- Chapman Solar
 - 6- Dogwood Creek Solar
 - 7- Jefferson Solar
 - 8- Luz Solar
 - 9- Marshall Solar
 - 10- Redwing Solar
 - 11- Sonoco Products Company
 - 12- Stamey Solar
 - 13- Tedder Solar
 - 14- Watauga Solar
 - Approved Planning/Filot - No Building Permits**
 - 15- Bell Solar
 - 16- Fairfield Solar
 - 17- Lotus Solar
 - 18- Scarlet Solar
 - Projects in Planning - No Filot**
 - 19- Gandy Solar
 - 20- Stripe Solar
 - Projects with Filot - Planning Pending**
 - 21- Cedar Creek Solar
 - 22- Culpepper Solar
 - 23- Duke Energy
 - 24- Fremont Solar
 - 25- Geb Solar
 - 26- Hawfinch Solar
 - 27- IP Solar
 - 28- Pit Stop Solar
 - 29- Rollins Solar
 - 30- Ross Solar
 - 31- Throwback Solar
 - Building in Process - Planning & Filot Complete**
 - 32- B&K Solar

ESRI, HERE, NPS, ESRI, HERE, Garmin, USGS, EPA, NPS

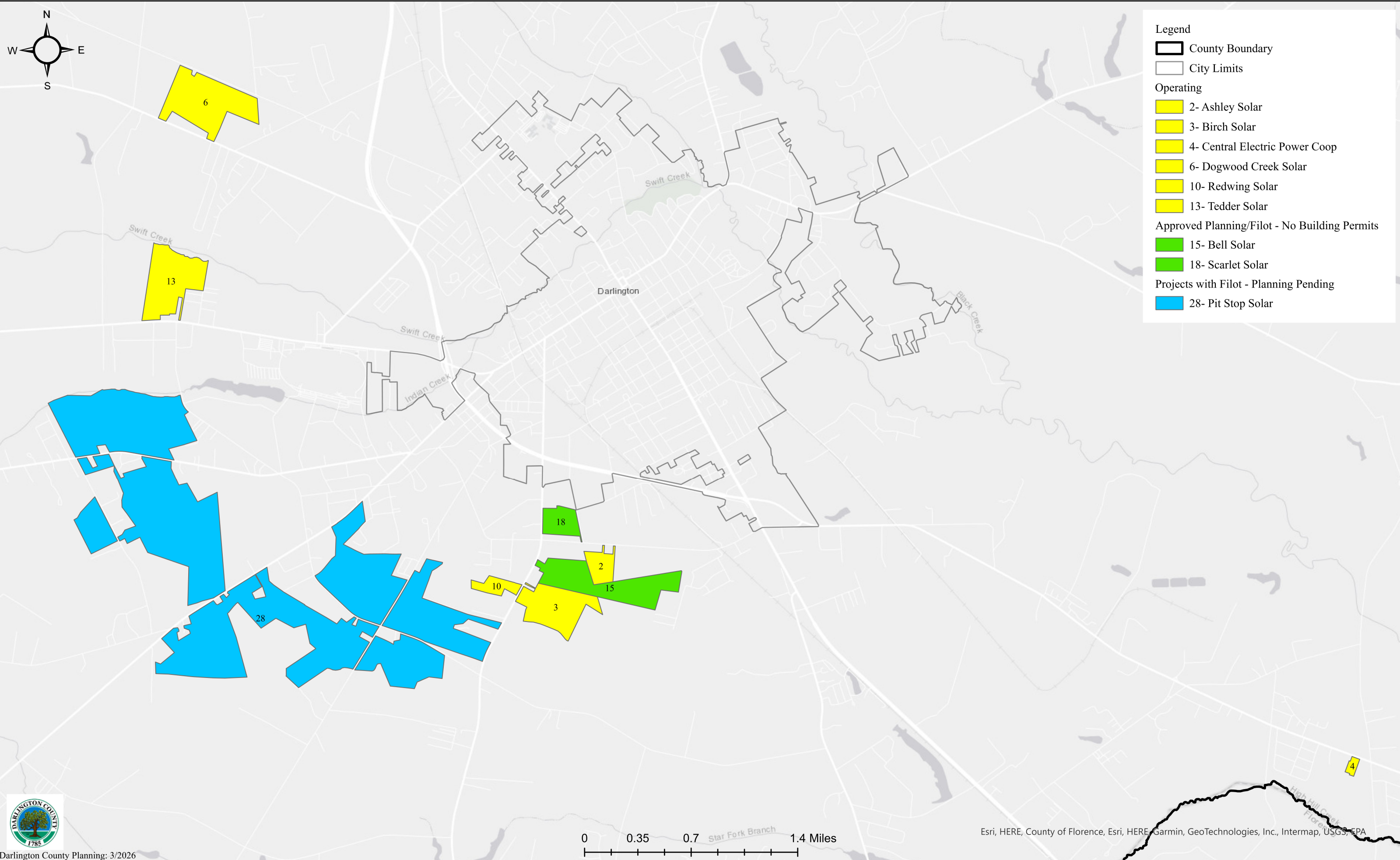


Solar Projects: Darlington



Legend

- County Boundary
- City Limits
- Operating**
 - 2- Ashley Solar
 - 3- Birch Solar
 - 4- Central Electric Power Coop
 - 6- Dogwood Creek Solar
 - 10- Redwing Solar
 - 13- Tedder Solar
- Approved Planning/Filot - No Building Permits**
 - 15- Bell Solar
 - 18- Scarlet Solar
- Projects with Filot - Planning Pending**
 - 28- Pit Stop Solar



Solar Projects: Hartsville

Legend

County Boundary

City Limits

Operating

- 1- 1634 Solar
- 5- Chapman Solar
- 7- Jefferson Solar
- 8- Luz Solar
- 9- Marshall Solar
- 11- Sonoco Products Company
- 12- Stamey Solar

Approved Planning/Filot - No Building Permits

- 16- Fairfield Solar
- 17- Lotus Solar

Projects in Planning - No Filot

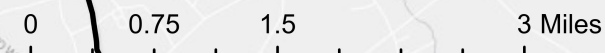
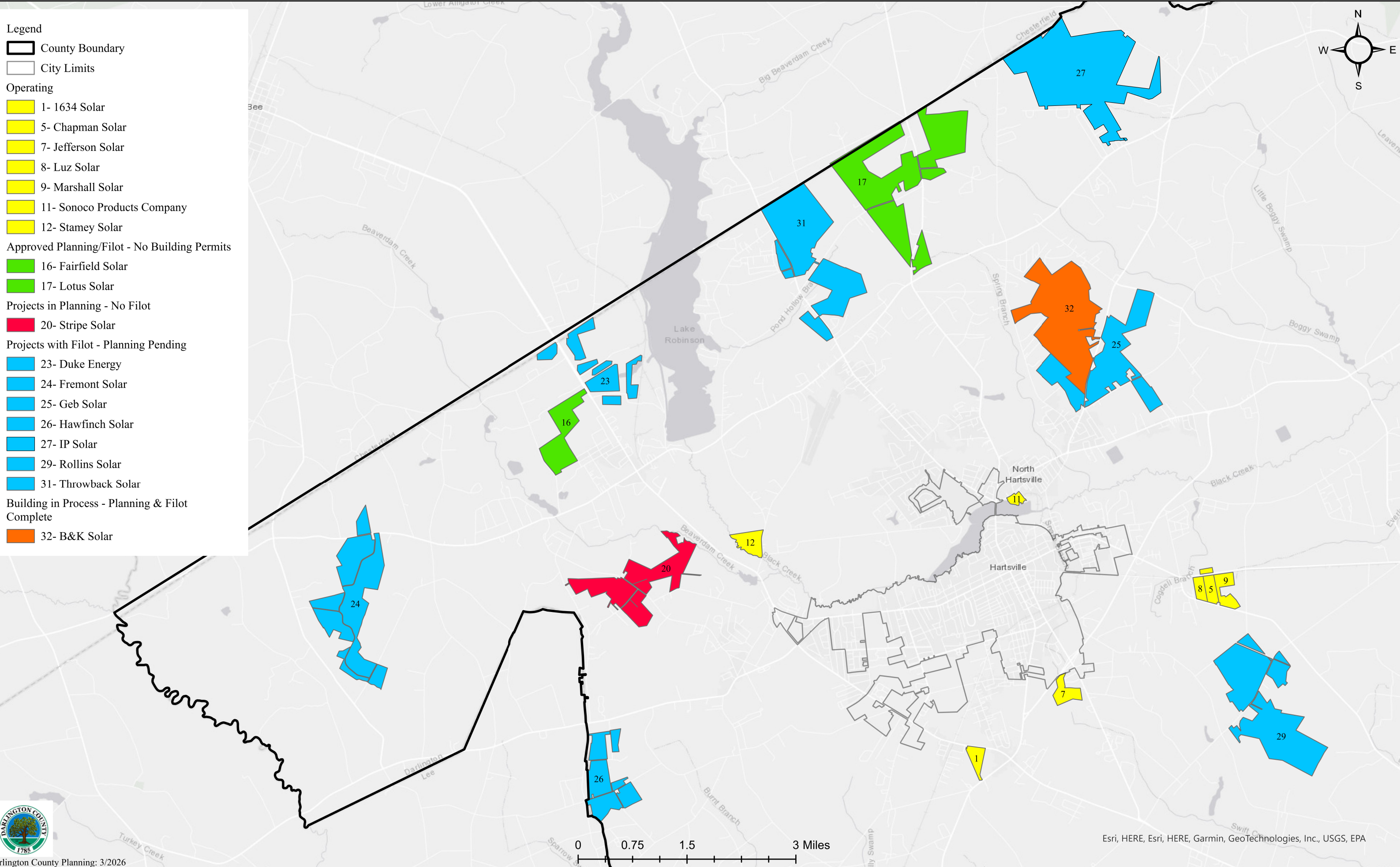
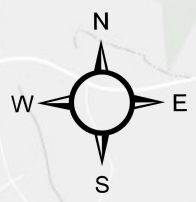
- 20- Stripe Solar

Projects with Filot - Planning Pending

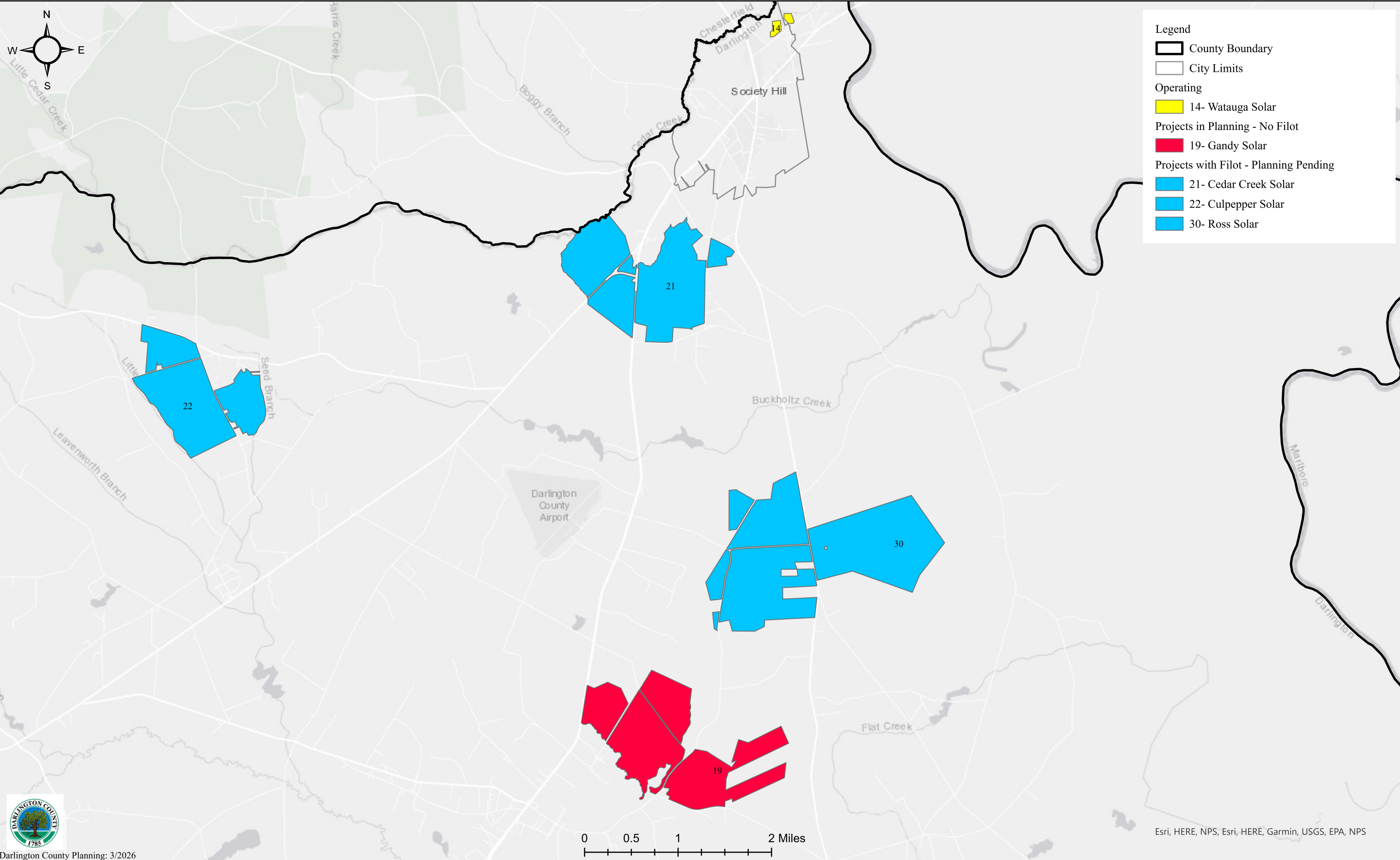
- 23- Duke Energy
- 24- Fremont Solar
- 25- Geb Solar
- 26- Hawfinch Solar
- 27- IP Solar
- 29- Rollins Solar
- 31- Throwback Solar

Building in Process - Planning & Filot Complete

- 32- B&K Solar



Solar Projects: Society Hill



Solar Site	Total Acreage of Tax Parcels Involved	Actual or GIS estimated acreage with solar panels
Operating Solar Sites		
1634 SOLAR	44.57	12.65
ASHLEY SOLAR	22.30	9
BIRCH SOLAR	71.03	10
CENTRAL ELECTRIC POWER COOP	4.40	1.4
CHAPMAN SOLAR	37.86	13.5
DOGWOOD CREEK SOLAR	85.36	47.5
JEFFERSON SOLAR	55.35	43
LUZ SOLAR	30.43	4.5
MARSHALL SOLAR	59.96	12.4
REDWING SOLAR	18.00	12.48
SONOCO PRODUCTS COMPANY	30.50	12
STAMEY SOLAR	60.00	9
TEDDER SOLAR	88.67	12.2
WATAUGA SOLAR	13.71	10.7
Operating Solar Sites Total	622.14	210.33
Approved Planning/Filot - No Building Permits		
BELL SOLAR	97.12	44.5
FAIRFIELD SOLAR	202.57	70
LOTUS SOLAR	870.74	450
SCARLET SOLAR	26.08	13.5
Approved Planning/Filot - No Building Permits Total	1,196.51	578
Projects in Planning - No Filot		
GANDY SOLAR	872.12	No Data
STRIPE SOLAR	417.89	No Data
Projects in Planning - No Filot Total	1,290.01	No Data

Projects with Filot - Planning Pending

CEDAR CREEK SOLAR	885.28	No Data
CULPEPPER SOLAR	677.46	284.58
DUKE ENERGY	1,089.12	250.89
FREMONT SOLAR	665.63	No Data
GEB SOLAR	554.21	No Data
HAWFINCH SOLAR	276.35	No Data
IP SOLAR	1,069.49	394.51
PIT STOP SOLAR	1,158.82	293.74
ROLLINS SOLAR	782.68	253.55
ROSS SOLAR	1,430.36	305.95
THROWBACK SOLAR	743.38	No Data

Projects with Filot - Planning Pending Total

9,332.78

Projects with Filot - Planning Pending Total (with available panel layout data)

6,207.93

1783.22

Building in Process - Filot and Planning Complete

B&K SOLAR	734.07	354.22
-----------	--------	--------

Building in Process - Filot and Planning Complete

734.07

354.22

Total tax parcel acreage of all known projects	13,175.51	N/A
Total tax parcel acreage of all known projects with FILOTs	11,885.50	N/A
Total tax parcel acreage and total solar panel coverage of projects with FILOTs and known or GIS estimated solar panel coverage	8,760.65	2925.77
Using the total known acreage in all parcels with FILOTs and the total estimated solar panel acreage coverage from known solar panel layout data - Percentage of total acreage occupied by solar panels	33.40%	
Total Farmland (2022 USDA Agricultural Census data)	162,716.00	
Using the averaged solar panel coverage percentage per acre of involved parcel acreage and the total farmland acreage per USDA; the percentage of farmland that would be covered in solar panels of all known projects with FILOTs would be -	2.44%	